

January 14, 2022

CANTON
4 MARKET STREET
COLLINSVILLE, CT 06022-0168
Attention Tree Warden for CANTON,

Eversource is focused on delivering reliable energy and superior customer service. As part of that commitment, we work year-round to trim and remove limbs and trees that threaten the electric system. In fact, trees remain the number one cause of power outages during storm events in our state.

In 2022, we will invest over \$72 million in tree work as part of the company's comprehensive vegetation management plan. Eversource's team of licensed arborists will collaborate with the tree wardens in each town in advance of the tree work performed by our qualified contractors.

As part of an amendment to Connecticut General Statutes, Section 16-234 from 2016, Eversource is required to provide each town with the plan detailing the proposed roads where vegetation management is to occur and an estimated time schedule. Included in this mailing is a map of the town with the roads with planned work highlighted. Planned tree work in your town is estimated to begin in February.

Stan Bartkowiak, an Eversource Arborist, will be the point of contact for all aspects of the work in your community. Stan Bartkowiak can be reached at 860-665-3657.

We've also developed a Vegetation Management Town Scorecard for your community. Our goal is to provide a visual, easy to understand overview of reliability and the state of our vegetation management efforts in your town.

The scorecard includes important data including:

- An overview of our 2022 plan for your community
- The number of block roads caused by trees during storms over the past 4 years
- The number of customers who refused to let us trim or remove trees that will impact our system
- Reliability data for Eversource customers related to vegetation

We understand the important role trees play in our communities. At the same time, we're committed to meeting customer expectations on reliability and must work together to ensure the safety of our communities.

Please contact me at 860-665-6103 for any questions regarding Eversource's vegetation management program.

Sincerely,

Sean Redding, Eversource Manager of Vegetation Management

Enc: Town Trimming Map, Town Scorecard

EVERSOURCE

CANTON



DISTRIBUTION TREE & RELIABILITY



TOTAL MILES SCHEDULED

8

TOWN TOTAL

80

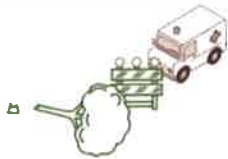


BACKBONE MILES SCHEDULED

4

TOWN TOTAL

30



BLOCKED ROADS (2016-2021)

65



CUSTOMER REFUSALS
& LIGHT TRIMS

2021
20

LAST 4 YEARS
55

TREE RELIABILITY 2021 YEAR TO DATE

CUSTOMERS SERVED

5,044

PERCENT TREE-RELATED OUTAGES

49%

OUTAGES

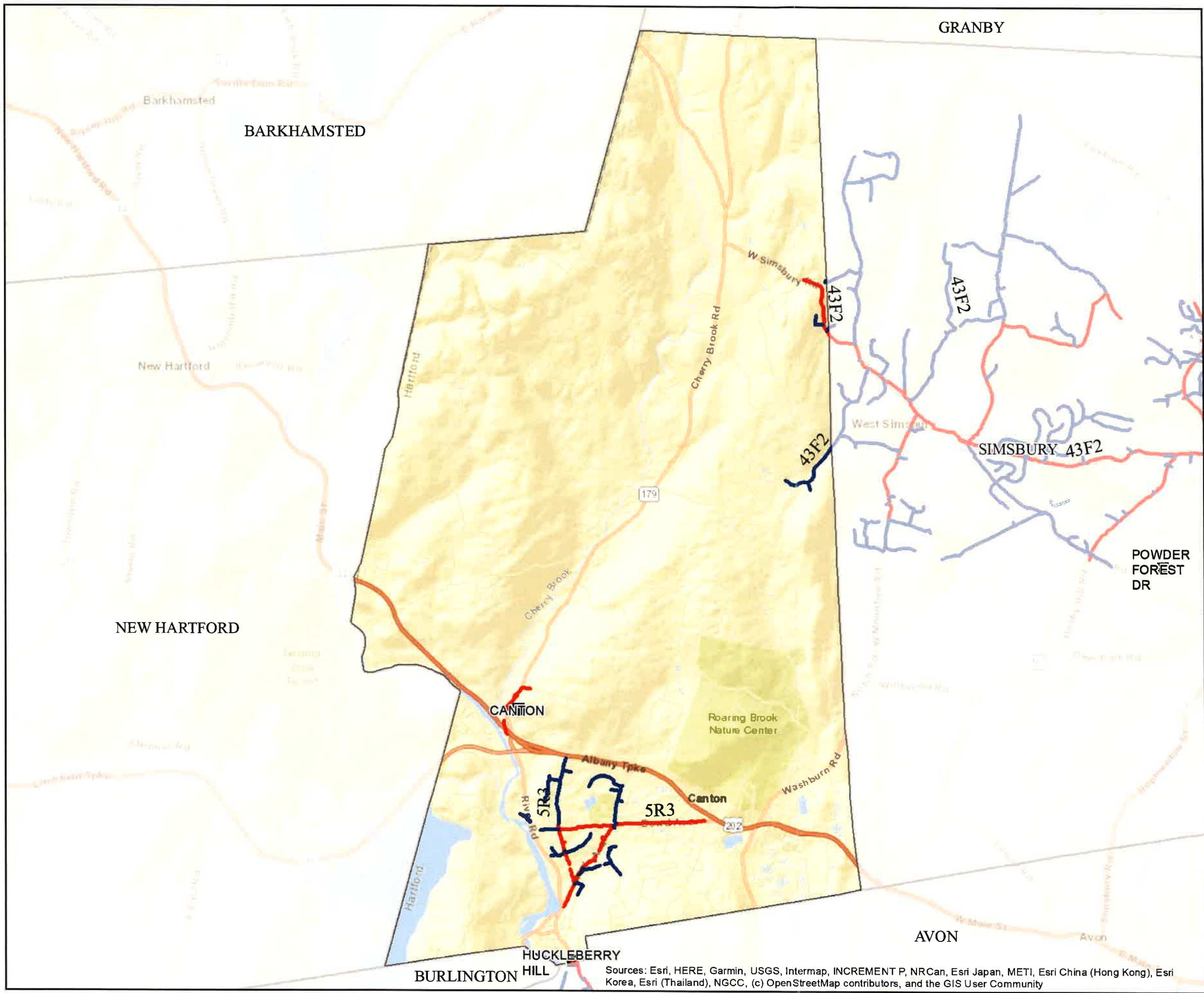
207

CUSTOMERS IMPACTED

3,289

MINUTES CUSTOMERS IMPACTED

845,382

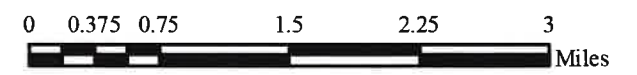


CANTON

- OH Primary 2022 Trimming**
- Backbone Maintenance Trimming
 - Scheduled Maintenance Trimming
 - Substations
 - Town Boundary

Town Mileage Summary

BB METT:	3.81
SMT:	4.27
Total:	8.08



PROPRIETARY INFORMATION: The material contained on the Overhead Distribution Circuit Map shall be considered proprietary to Eversource (ES), and Users (which shall be defined as any person or entity who has received the Map through sale, purchase, exchange gift, or otherwise) shall keep it in confidence and shall not furnish or disclose it to any third party without the prior written permission of Eversource.

Date: 8/20/2021

Sources: Esri, HERE, Garmin, USGS, Intermap, INCREMENT P, NRCan, Esri Japan, METI, Esri China (Hong Kong), Esri Korea, Esri (Thailand), NGCC, (c) OpenStreetMap contributors, and the GIS User Community