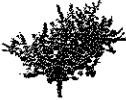

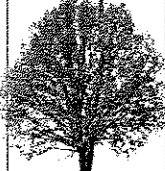


## A plan for all seasons

We trim trees throughout the year. It's a continuing effort to keep trees in our service area (which covers nearly 17,000 miles of wire) from growing too close to power lines and disrupting service. Trees that are a risk to reliable service are cut back far enough to keep them away from power lines for at least four to six years. Our tree-trimming program is one way we provide safe and reliable electric service to our 1.2 million residential and business customers in Connecticut.

Plan before you plant

| Low-growing trees Up to 25 feet in height   |   |
|---|---|
|   | May be planted <b>near roadside power lines</b>               |
|   | Crabapple, dogwood, hawthorn, plum and Japanese maple         |
| Medium-sized trees 25-45 feet in height   |   |
|  | Should be planted <b>15-30 feet from power lines</b>          |
|   | Arborvitae, flowering cherry, magnolia, hornbeam and shadblow |
| Large-growing trees More than 45 feet in height                                     |   |
|   | Should be planted at least <b>30 feet from power lines</b>    |
|   | Oak, maple, locust, spruce and pines                          |

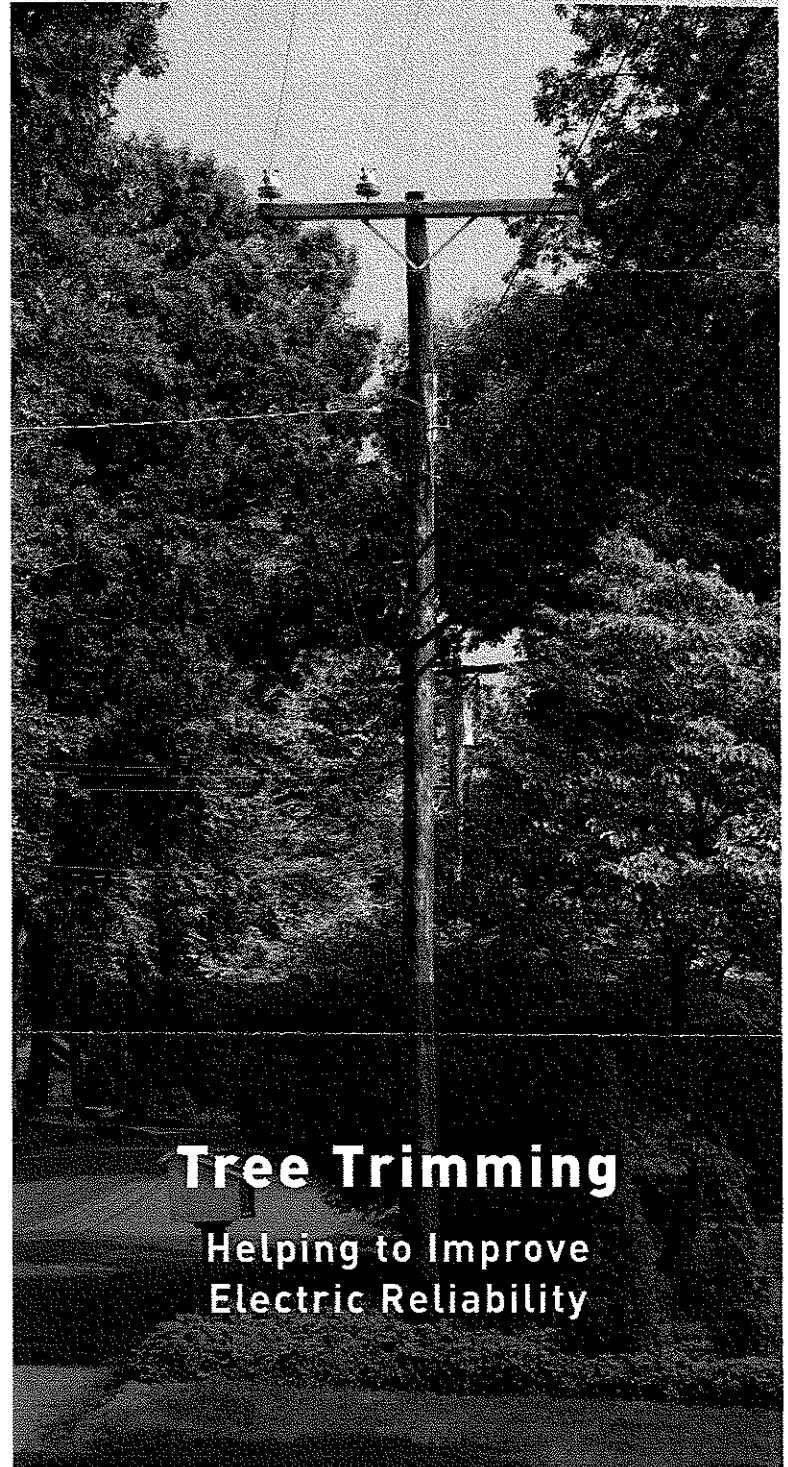
Any questions?

For more information about our tree-trimming program, call 1-800-286-2000. Ask for the arborist responsible for your town, or visit our website at [www.cl-p.com](http://www.cl-p.com).

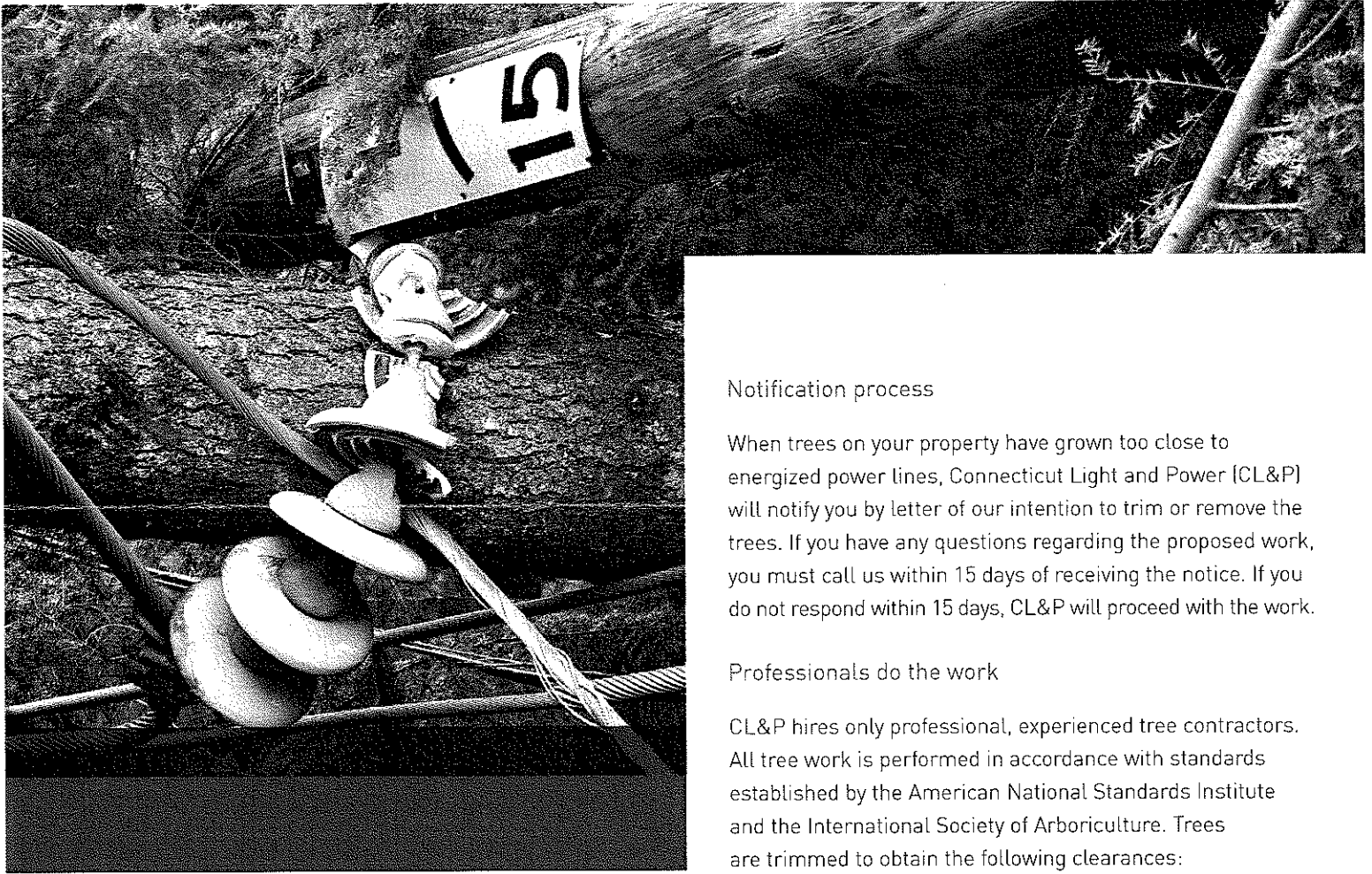


**Connecticut  
Light & Power**

A Northeast Utilities Company



**Tree Trimming**  
Helping to Improve  
Electric Reliability



### Notification process

When trees on your property have grown too close to energized power lines, Connecticut Light and Power (CL&P) will notify you by letter of our intention to trim or remove the trees. If you have any questions regarding the proposed work, you must call us within 15 days of receiving the notice. If you do not respond within 15 days, CL&P will proceed with the work.

### Professionals do the work

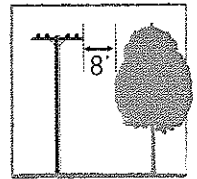
CL&P hires only professional, experienced tree contractors. All tree work is performed in accordance with standards established by the American National Standards Institute and the International Society of Arboriculture. Trees are trimmed to obtain the following clearances:

## Trees too close to power lines are the single largest cause of power outages!

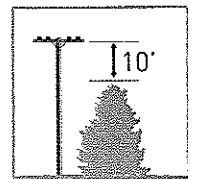
Trees and power lines don't mix. When they touch, it can cause power outages, fires and downed lines.

It's important to trim or remove trees that have grown too close to energized power lines to help provide reliable electric service. Better tree clearance also enables our line crews to find and repair problems faster.

*Any limb extending within 8 feet of clearance will be cut back at a main branching point, or at the trunk, leaving no stub, even if that point is more than 8 feet from the wires.*



*Any limb that is less than 10 feet below the wire will be trimmed. Certain main branches on older trees can remain inside of the minimum clearances, but this depends on the health of the tree, rate and direction of growth and likelihood of its limbs reaching the wires.*



*Any limb that is less than 15 feet above the wire will be trimmed. Additionally, all brush that is 12 feet tall is typically removed, as are tall-growing trees with trunks of 6-inches diameter or less at chest height.*

